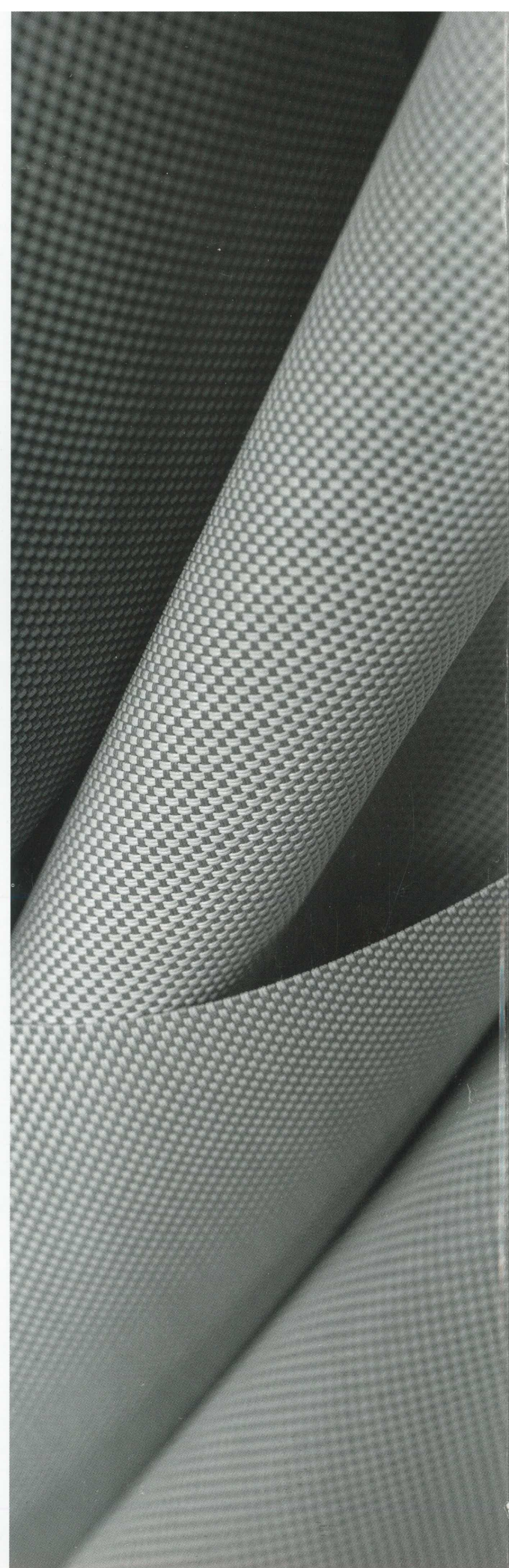




STYLE  
6001 / 4001

WEAVING  
EXCELLENCE  
WITH  
INNOVATION



## STYLE 6001 / 4001 SPECIFICATIONS

SheerWeave 6001 is a lightweight fabric woven to offer a polyester alternative to the delicate textures available among Phifer's fiberglass meshes. Our thinnest polyester fabric available to date, the 6001 style offers a softer hand and textile appearance in a robust PVC finish. SheerWeave 4001 is a 1% openness offering in Phifer's popular SheerWeave 4000 range. Suitable for interior and exterior, this stable, 2x2 basket weave is designed for strength, durability, and insulation.

<b>FIRE CLASSIFICATION</b>	NFPA 701 TM#1 (small scale). Others available for submission upon request. <i>Fire classifications are subject to change. Please go to <a href="http://phifer.com">phifer.com</a> for the most current information.</i>	
<b>BACTERIA AND FUNGAL RESISTANCE</b>	ASTM E 2180    ASTM G21    AATCC30 Part 3    ASTM D 3273	GREENGUARD Mold and Bacteria Standard ASTM 6329 includes Microban antimicrobial additives
<b>ENVIRONMENTAL CERTIFICATION</b>	GREENGUARD    GREENGUARD Gold	Certified to these standards for low chemical emissions into indoor air during product usage
<b>SAFE USE</b>	REACH (EC 1907/2006) compliant RoHS/Directive 2002/95/EC	US Consumer Product Safety Commission Section 101 ANSI/WCMA A 100.1-2007 for lead content
<b>WARRANTY</b>	10-year interior    5-year exterior	
<b>UV PROTECTION</b>	Seal of Approval by the Melanoma International Foundation (MIF) for effectiveness in preventing sun damage to the skin or eyes	

STYLE	6001	4001
<b>WIDTHS</b>	63" to 126" 160.0 cm to 320 cm	63" to 126" 160.0 cm to 320 cm
<b>ROLL LENGTH</b>	30 Linear Yards 27.4 Linear Meters	25 Linear Yards 22.8 Linear Meters
<b>COMPOSITION</b>	19% Polyester 81% Vinyl on Polyester	24% Polyester 76% Vinyl on Polyester
<b>MESH WEIGHT</b>	15.8 oz/yd <sup>2</sup> 535 g/m <sup>2</sup>	21.4 oz/yd <sup>2</sup> 725 g/m <sup>2</sup>
<b>FABRIC THICKNESS</b>	0.025 in 0.63 mm	0.037 in 0.94 mm
<b>OPENNESS FACTOR</b>	Approximately 1%	Approximately 1%
<b>UV BLOCKAGE</b>	Approximately 99%	Approximately 99%

### PHIFER INCORPORATED.

P. O. Box 1700 • Tuscaloosa, Alabama 35403-1700 USA  
Phone: 205.345.2120 • FAX: 205.391.0799  
Toll Free USA/Canada: 1.800.221.5497  
[phifer.com](http://phifer.com) • ISO Registered



© SheerWeave is a registered trademark of PHIFER INCORPORATED.  
© MICROBAN is a registered trademark of Microban Products Company.  
TM UL, the UL logos and the UL mark are trademarks of UL LLC.  
© PHIFER INCORPORATED V20 040720

Code	Color	SOLAR OPTICAL PROPERTIES				SHGC/G VALUE g-tot (glass & blind)	
		TS	RS	AS	TV	SINGLE 1/4 CL	INSULATING 1 HA
<b>STYLE 6001</b>							
P07	Alabaster	8	63	29	4	0.29	0.27
P10	Granite	4	45	52	3	0.39	0.22
Q15	Greystone	4	36	60	3	0.43	0.29
V07	Pewter	4	32	64	3	0.45	0.30
V15	Ash	2	14	84	2	0.55	0.35
Q16	Tobacco	2	5	93	2	0.59	0.37
<b>STYLE 4001</b>							
P06	Chalk	9	79	12	6	0.20	0.18
P67	Chalk Heather	5	60	35	4	0.30	0.23
P10	Granite	3	53	43	3	0.34	0.24
V07	Pewter	2	30	68	2	0.46	0.30
P07	Alabaster	5	67	28	4	0.26	0.21
U32	Linen	7	69	24	4	0.25	0.20
Q12	Pebblestone	3	53	44	2	0.34	0.24
Q15	Greystone	2	41	57	2	0.40	0.28
Q15	Ash	1	11	88	1	0.56	0.35
Q16	Tobacco	1	5	94	1	0.59	0.37
V10	Ebony	1	3	96	1	0.60	0.37



PROTECTION THAT LIVES ON  
**MICROBAN**<sup>®</sup>  
 Microban<sup>®</sup> antimicrobial protection inhibits the growth of stain-causing bacteria, mold and mildew on the shade.



TS = Solar Transmittance  
 RS = Solar Reflectance  
 AS = Solar Absorptance  
 TV = Visual Transmittance

SHGC = Solar Heat Gain Coefficient

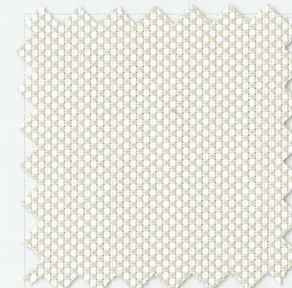
1/4 CL = 1/4" Clear Glass  
 1 HA = 1" Heat Absorbing Glass

Fabrics Installed Internally  
 Zero-Degree Profile Angle

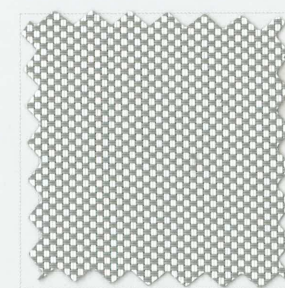
For additional performance values,  
 test references and technical  
 definitions visit us at [phifer.com](http://phifer.com).

STYLE 6001

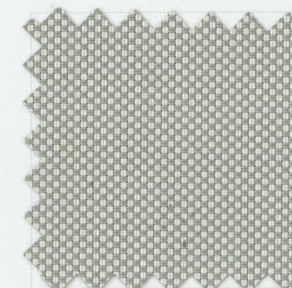
P07 Alabaster



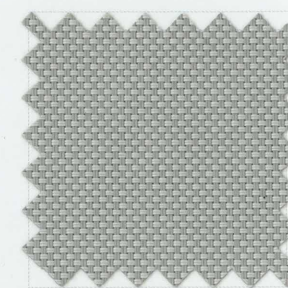
P10 Granite



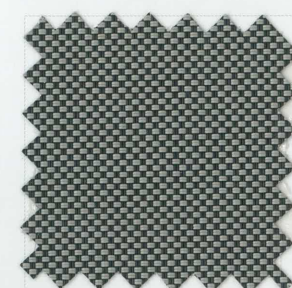
Q15 Greystone



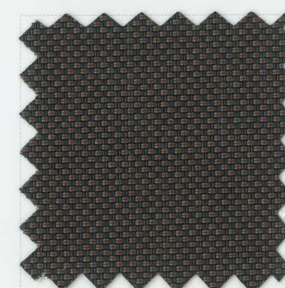
V07 Pewter



V15 Ash

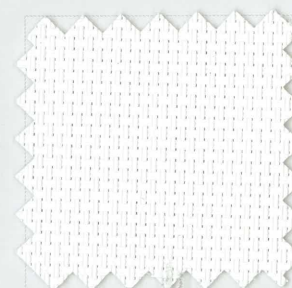


Q16 Tobacco

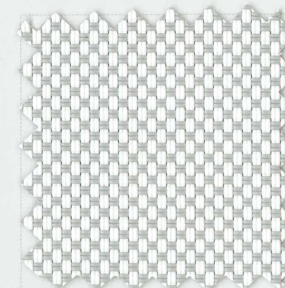


STYLE 4001

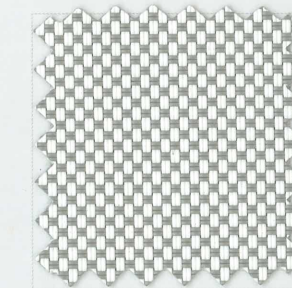
P06 Chalk



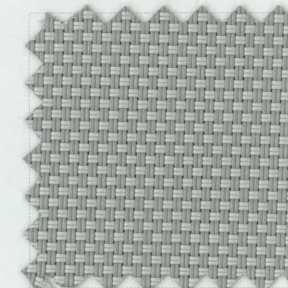
P67 Chalk Heather



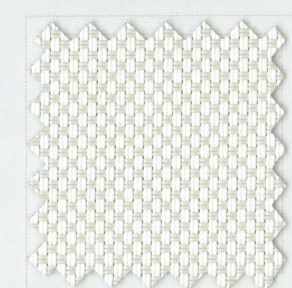
P10 Granite



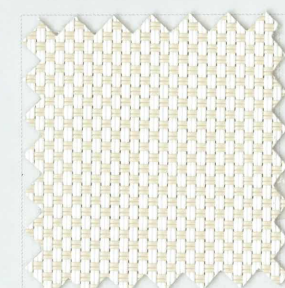
V07 Pewter



P07 Alabaster



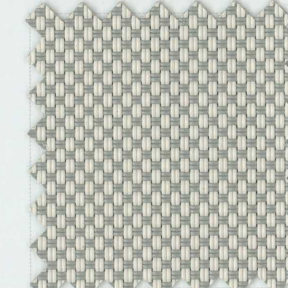
U32 Linen



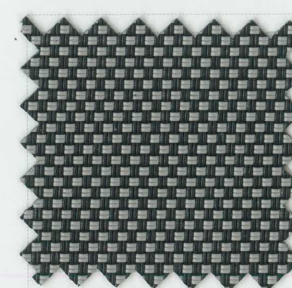
Q12 Pebblestone



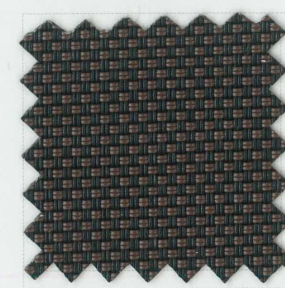
Q15 Greystone



V15 Ash



Q16 Tobacco



V10 Ebony



Q27

