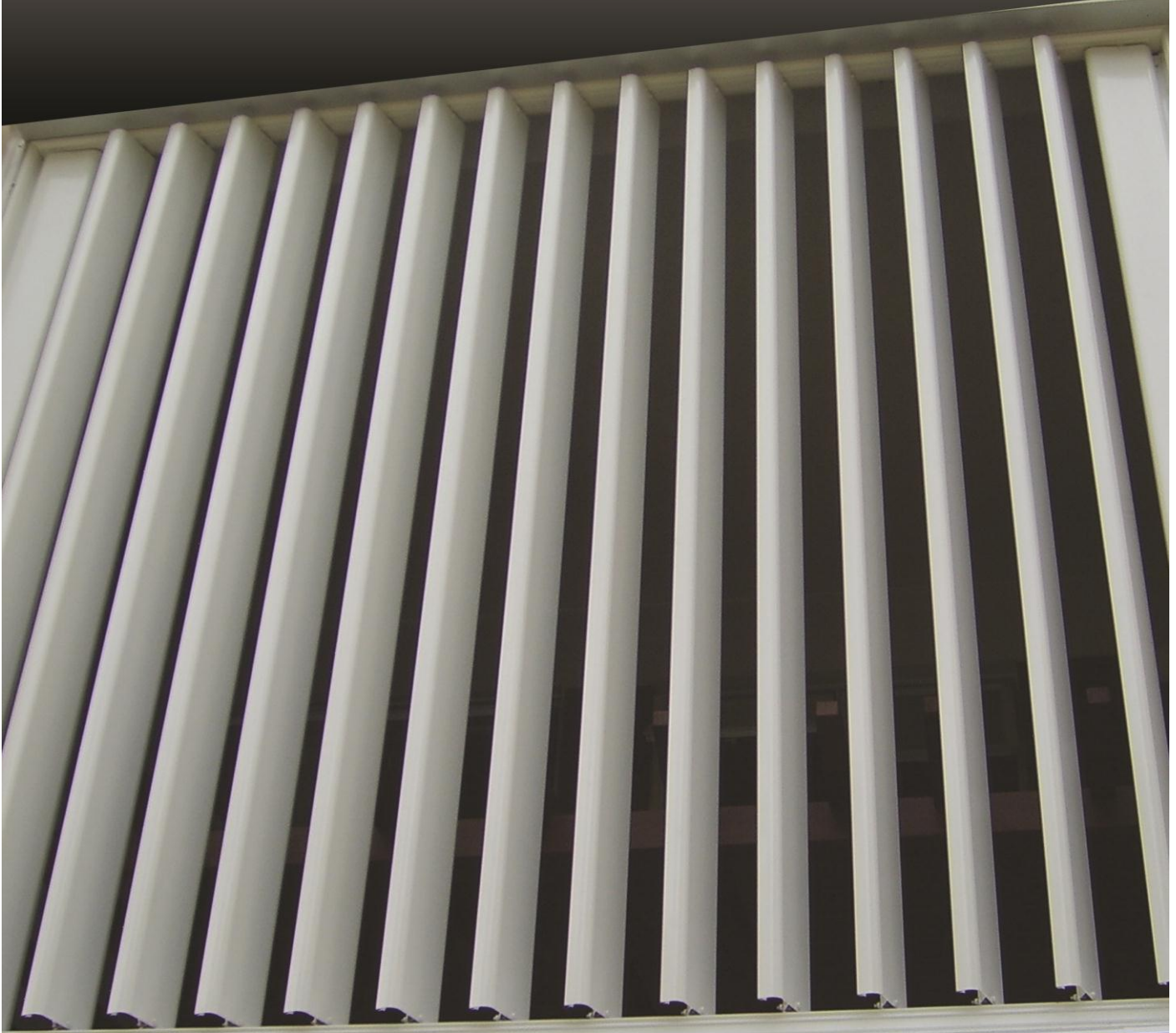




SUN LOUVERS

A Environmental & Green Benefit



Privacy
Energy Saving
Air Ventilation
Light Emmission



Green Benefits of Exterior Louvers

External Louvers Produce Green Benefits. Several books and studies exist dealing with the benefits and effects of exterior louvers on building energy management.

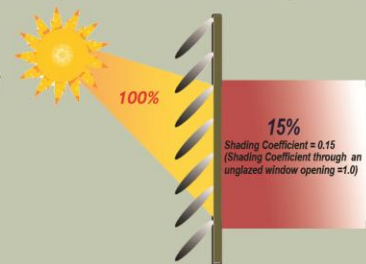
Recent studies, published on the internet show that an external controllable solar shading system substantially reduces both the capital cost of plant and the associated running costs for air conditioning. A 20% reduction in the annual cooling energy demand can be achieved, which translates into a huge savings per annum.

As one would expect, the benefits to the owner in the form of economy, make for a strong case in favor of External Louver systems. Another compelling reason for using External Louver systems is the architectural appearance which may become a positive aesthetic enhancement.

- Solar Shading is probably the most underestimated and misunderstood source of passive cooling and CO₂ reduction realized by reducing the cooling energy demand.
- Successful daylighting designs will pay close attention to the use of external shading devices to reduce glare and excess contrast in the workspace.
- External Louvers will reduced cooling energy demand by avoiding superfluous solar heat gains, and doing it without compromising the benefits of daylighting.

• Benefits of Daylighting include:

- Improved Life-Cycle Cost
- Increased User Productivity
- Reduced Emissions
- Reduced operating costs
- Payback by energy savings



Fixed • Manual • Motorised
for Sun

External V Louvers

Frame : Aluminium Alloy
Main Frame : Steel , Aluminium
Max width per panel : 6.0m
(subjected to Louvers Design)



External Roof Louvers w Composite Roof* (optional)

Frame : Aluminium Alloy
Main Frame : Steel , Aluminium
Max width per panel : 3.0m
(subjected to Louvers Design)

Fixed • Manual • Motorised
for Sun & Rain*

External H Louvers

Frame : Aluminium Alloy
Main Frame : Steel , Aluminium
Max width per panel : 3.0m
(subjected to Louvers Design)

Fixed • Manual • Motorised
for ventilation



Fixed Louvers

Frame : Aluminium Alloy
Main Frame : Steel , Aluminium
Max width per panel : 3.0m
(subjected to Louvers Design)

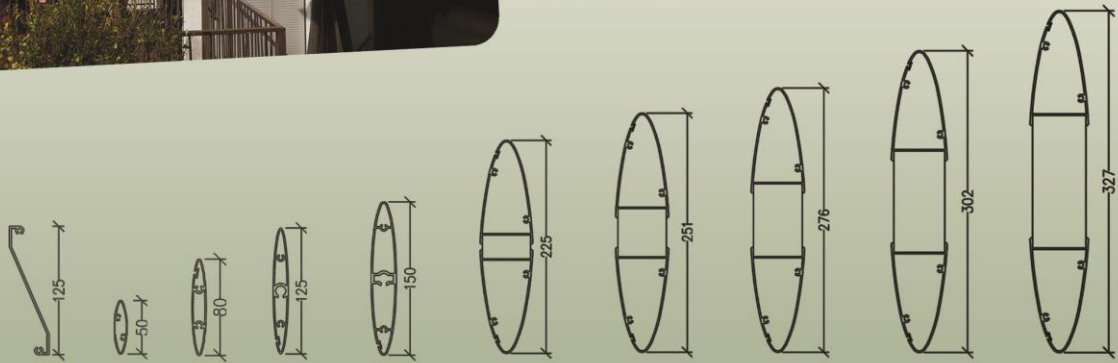
for sun/Rain & ventilation

Internal H Louvers

Frame : Aluminium Alloy
Main Frame : Steel , Aluminium
Max width per panel : 3.0m
(subjected to Louvers Design)

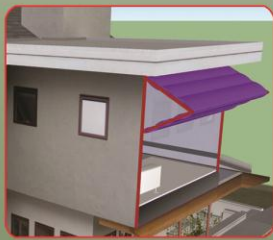
Fixed • Manual • Motorised
for privacy





Type of Louvers Panels applicable

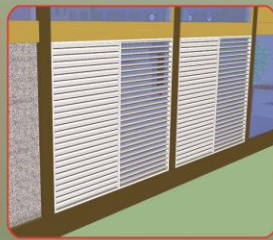
Other Louvers Applications



Bi-Fold Shading



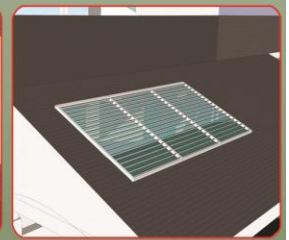
Fixed / Sliding Louvers



Door / Window Louvers



Retractable Louvers



Skylight Louvers

Applications:-

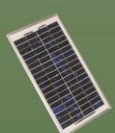
Shading, Cooling, Wind Guide , Sun Control, Security Grills, Child Protection Grills, Smoke Louvers, Smart Homes , Glass Homes, Smart Homes, & more

Also available in Design & Build OR in Customized Shapes , Sizes & Designs.

Accessories



Remote Control upto 16Channels



Solar Powered



Battery Pack



Rain Sensor with Heater



Home Automation via Mobiles*



Timer



Wind & Sun Sensor



Smoke Detector



Parasols Unlimited Pte Ltd

Blk 2024, Bukit Batok St 23, #02-32,
Singapore 659529
T: 6565 5330 F: 6563 9048
W: www.francia.com.sg
E: parasols@pacific.net.sg

M&J Francia Sdn Bhd

Suite 163-1-10, Level 1, Wisma Mah Sing,
Jalan Sungai Besi , 57100 Kuala Lumpur
T : 03-9222 1801 F : 03-9222 1803
W : www.mnjss.com
E : mnjss@tm.net.my